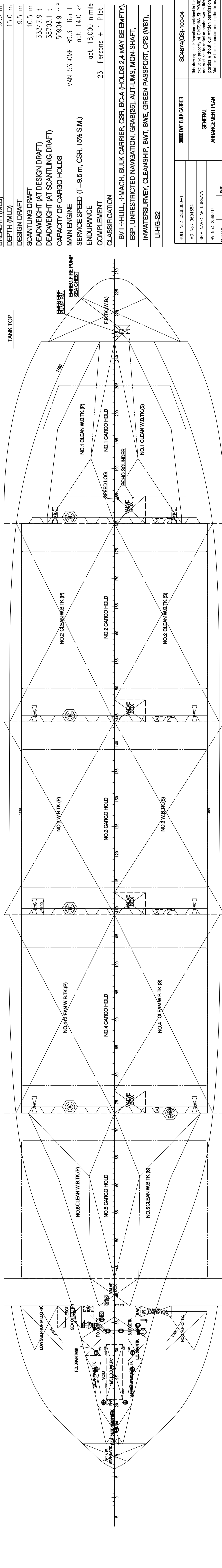
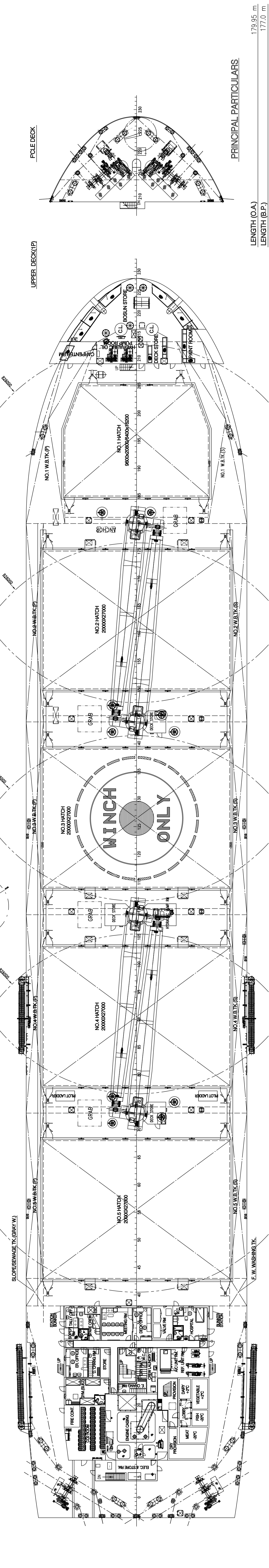
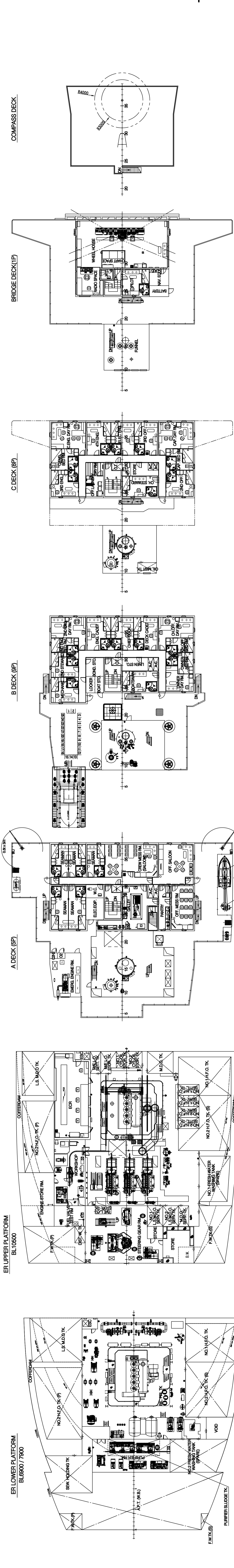
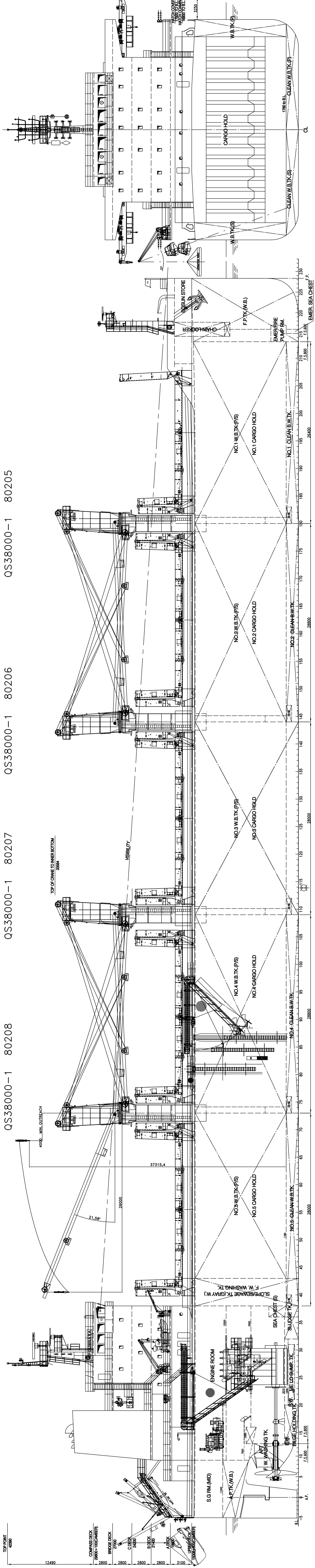


TTS-TLB 36 t - 26 m
CRANE 4
HULL No. Project No.
QS38000-1 80208

TTS-TLB 36 t - 26 m
CRANE 3
HULL No. Project No.
QS38000-1 80207

TTS-TLB 36 t - 26 m
CRANE 2
HULL No. Project No.
QS38000-1 80206

TTS-TLB 36 t - 26 m
CRANE 1
HULL No. Project No.
QS38000-1 80205



PRINCIPAL PARTICULARS

LENGTH (O.A.)	179.95 m
LENGTH (B.P.)	177.0 m
BREADTH (MLD)	32.0 m
DEPTH (MLD)	15.0 m
DESIGN DRAFT	9.5 m
SCANTLING DRAFT	10.5 m
DEADWEIGHT (AT DESIGN DRAFT)	33347.9 t
DEADWEIGHT (AT SCANTLING DRAFT)	38703.1 t
CAPACITY OF CARGO HOLDS	50904.9 m ³
MAIN ENGINE	MAN S550ME-B6.3 Tier II
SERVICE SPEED (T=9.5 m, CSR, 15% S.M.)	abt. 14.0 kn
ENDURANCE	abt. 18,000 n.mile
COMPLEMENT	23 Persons + 1 Pilot
CLASSIFICATION	
BY / : HULL : MACH, BULK CARRIER, CSR, B.C.A. (HOLDS 2, 4 MAY BE EMPTY),	
ESP, UNRESTRICTED NAVIGATION, GRAB[5], AUT-UMS, MON-SHAFT,	
INWATERSURVEY, CLEANSHIP, BWT, BWE, GREEN PASSPORT, GPS (WBT),	
LHG-S2	

GENERAL ARRANGEMENT PLAN

HELL NO. CQ38000-1	SC-4674(CS)-100-4
MD NO. 86469A	3800 TWT BULK CARRIER
SHIP NAME: SP. TURBINA	
BY: NO. 2508AU	
DESIGNED: DATE	
CHECKED: DATE	
DATE	
DATE	
DATE	
DATE	

Scale: 1:1000
Date: 2024.08.15
Project No.: QS38000-1 80208